



IC Recorder

Operating Instructions

IC RECORDER

ICD-BX800

http://www.sony.net/

Notice for the customers in Canada

This Class B digital apparatus complies with Canadian ICES-003.

FOR UNITED STATES CUSTOMERS. NOT APPLICABLE IN CANADA, INCLUDING IN THE PROVINCE OF QUEBEC. POUR LES CONSOMMATEURS AUX ÉTATS-UNIS. NON APPLICABLE AU CANADA, Y COMPRIS LA PROVINCE DE QUÉBEC.

The following FCC statement applies only to the version of this model manufactured for sale in the USA. Other versions may not comply with FCC technical regulations.

INFORMATION

This equipment has been tested and found to comply with the limits for a Class B digital device, pursuant to Part 15 of the FCC Rules. These limits are designed to provide reasonable protection against harmful interference in a residential installation. This equipment generates, uses and can radiate radio frequency energy and, if not installed and used in accordance with the instructions, may cause harmful interference to radio communications. However, there is no guarantee that interference will not occur in a particular installation. If this equipment does cause harmful interference to radio or television reception, which can be determined by turning the equipment off and on, the user is encouraged to try to correct the interference by one or more of the following measures: Reorient or relocate the receiving antenna. Increase the separation between the equipment and receiver. Connect the equipment into an outlet on a circuit different from that to which the receiver is connected. Consult the dealer or an experienced radio/TV technician for help.

You are cautioned that any changes or modifications not expressly approved in this manual could void your authority to operate this equipment.

This device complies with part 15 of the FCC Rules. Operation is subject to the following two conditions: (1) this device may not cause harmful interference, and (2) this device must accept any interference received, including interference that may cause undesired operation.

For the customers in Europe

Disposal of Old Electrical & Electronic Equipment (Applicable in the European Union and other European countries with separate collection systems)

This symbol on the product or on its packaging indicates that this product shall not be treated as household waste. Instead it shall be handed over to the applicable collection point for the recycling of electrical and electronic equipment. By ensuring this product is disposed of correctly,

Troubleshooting

Troubleshooting

Before taking the IC recorder for repair, check the following sections. Should any problem persist after you have made these checks, consult your nearest Sony dealer. Please note that recorded messages may be erased during service or repair work.

The IC recorder cannot be turned off.

- Slide the HOLD switch in the direction of the arrow when the IC recorder is in the stop mode.

The IC recorder cannot be turned on.

- The HOLD switch is set. Slide the HOLD switch in the direction opposite that of the arrow.

Display does not disappear. Display appears blurred.

- Remove the protective film on the display window before you use the IC recorder.

The IC recorder does not operate.

- The batteries have been inserted with incorrect polarity.
- The batteries are weak.
- The power to the IC recorder is off. Slide the HOLD switch in the direction opposite that of the arrow.
- The HOLD function is activated. Slide the HOLD switch in the direction opposite that of the arrow.

No sound comes from the speaker.

- The volume is turned down completely.
- Headphones are plugged in.

Sound comes from the speaker even when the headphones are plugged in.

- If you plug in the headphones not securely during playback, the sound may come from the speaker. Unplug the headphones, and then insert them securely.

The operation indicator does not light.

- "LED" is set to "OFF". Display the menu and set "LED" to "ON."

- If you divide a message frequently, the unit may become unable to divide the message further.
- You selected a message that has been locked. Set "LOCK" to "OFF" in the menu before dividing the message.

When recording from other equipment, the input level is too strong or not strong enough.

- Connect the headphone jack of other equipment to the μ (microphone) jack of the IC recorder and adjust the volume level on the equipment connected to the IC recorder.

Playback speed is too fast or too slow.

- The playback speed is adjusted in DPC. Adjust the speed in DPC again in the menu.

"--" is displayed.

- You have not set the clock.

"-Y-M-D" or "-S-" is displayed on the REC DATE display.

- The date of recording will not be displayed if you recorded the message when the clock was not set.

The clock setting is reset.

- The clock setting will be reset within about 1 minute. When you replace the batteries, please provide new batteries.

"SET DATE" is displayed and you cannot set the alarm.

- If the clock is not set, you cannot set the alarm.

"PRE SET" is displayed and you cannot set the alarm.

- You cannot set the alarm at the same date and time previously set on another message.

"BACK-D" is displayed and you cannot set the alarm.

- You cannot set the alarm when the time has already passed.

There are fewer menu items displayed in the menu mode.

- The menu items displayed are different depending on the operation modes (stop mode, playback mode and recording mode).

The battery life is short.

- The battery life is based on playback with the volume level set to 27. The battery life may shorten depending on the operation of the IC recorder.

There is no battery power remaining after long time without using the IC recorder.

- Even if you do not use the IC recorder, the batteries are consumed slightly. The battery life in this case varies depending on humidity or other environmental conditions. Usually, the batteries last about 2 months. If you do not intend to use the IC recorder for an extended period of time, it is recommended that you turn the power off or remove the batteries.

The changed menu setting does not function.

- If the batteries are removed just after the menu setting is changed, the menu setting may not function.

It takes a long time for the IC recorder to start.

- If the IC recorder is required to process a large amount of data, it may take longer for the IC recorder to start. This is not a malfunction of the IC recorder. Wait until the start-up display disappears.

The IC recorder does not operate correctly.

- Take out the batteries and insert them again.

You cannot erase a message.

- You selected a message that has been locked. Set "LOCK" to "OFF" in the menu before erasing the message.

Error Messages

LO BATT

- Batteries are exhausted. Replace the old batteries with new ones.

SET DATE

- Set the clock; otherwise, you cannot set the alarm.

FULL (REC flashes at the same time)

- The remaining memory capacity of the IC recorder is insufficient. Erase some messages before recording.

FULL ("99" flashes at the same time)

- As there are already 99 messages in the current folder, you cannot record a new message. Erase some messages before recording.

FULL (folder indicator flashes at the same time)

- As there are already 99 messages in the folder to which you want to move a message, you cannot move a message. Erase some messages before moving.

NO DATA

- The selected folder does not have any messages. You cannot move a message or set the alarm, etc., because of this.

System Limitations

There are some system limitations of the IC recorder. Troubles as mentioned below are not malfunctions of the IC recorder.

You cannot record messages up to the maximum recording time.

- If you record messages in a mixture of SHQ, HQ, SP and LP modes, the recordable time varies from the maximum SHQ mode recording time to the maximum LP mode recording time.
- The sum of the number on the counter (elapsed recording time) and the remaining recording time may be less than the IC recorder's maximum recording time.

You cannot specify the finishing point B.

- You cannot specify the finishing point B before the starting point A has been set.

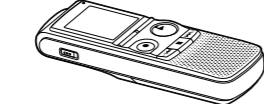
When you set A-B Repeat playback, the set positions move a little.

- Depending on the files, the set positions may move.

Getting Started

Step 1: Checking the Contents of the Package

IC Recorder (1)



Remove the film on the display window before you use the IC recorder.

LR03 (size AAA) alkaline batteries (2)



Stereo headphones* (1)

Carrying pouch* (1)

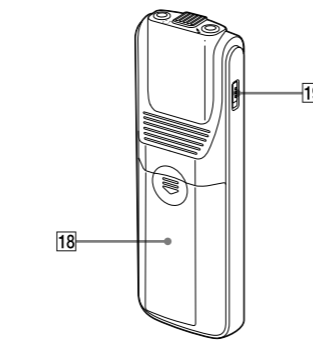
Stereo microphone with shirt-clip* (1)

Operating Instructions

* The stereo headphones, carrying pouch and stereo microphone with shirt-clip are supplied with some models in some regions only.

You are cautioned that any changes or modifications not expressly approved in this manual could void your authority to operate this equipment.

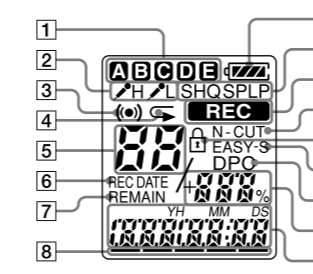
Rear



18 Battery compartment

19 HOLD switch

Display window



1 Folder indicator

Displays the folder (A, B, C, D, or E) you have selected.

2 Microphone sensitivity

Displays the microphone sensitivity. For details about the settings, see "Menu settings" on the reverse side of this paper.

3 Alarm indicator

Appears when the alarm is set for a message.

4 Repeat play indicator

Appears when a message is played back repeatedly.

5 Selected message number

REC DATE (recorded date) indicator

The recorded date or time is displayed with the REC DATE indicator.

7 REMAIN indicator

When the IC recorder is in the recording or stop mode, the remaining recording time is displayed with the REMAIN indicator, or when the IC recorder is in the playback mode, the remaining time of the current message is displayed with the REMAIN indicator.

8 Remaining memory indicator

Displays the remaining memory and decreases one by one during recording.

9 Battery indicator

Displays the remaining battery power.

10 Recording mode indicator

Displays the recording mode set using the menu when the IC recorder is in the recording or stop mode, and displays the current recording mode when the IC recorder is in the playback mode. For details about the settings, see "Menu settings" on the reverse side of this paper.

11 REC (recording) indicator

Appears while the IC recorder is recording.

12 N-CUT (noise cut) indicator

Appears when "N-CUT" is set to "ON" in the menu.

13 Lock indicator

Appears when "LOCK" is set to "ON" in the menu.

14 EASY-S (easy search) indicator

Appears when the "EASY-S" is set to "ON" in the menu.

15 DPC (Digital Pitch Control) indicator

Appears when the "DPC" is set to "ON" in the menu.

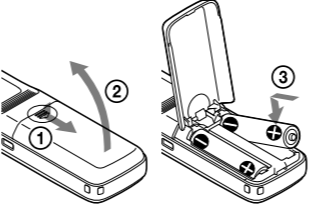
16 Total number of messages in the folder/ DPC setting

17 Elapsed time/Remaining time/Recorded date or time indication/Message

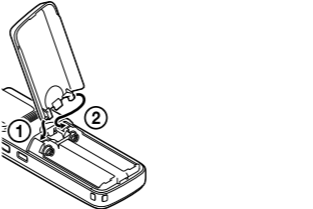
Step 2: Preparing a Power Source

Remove the film on the display window before you use the IC recorder.

Slide and lift the battery compartment lid, insert LR03 (size AAA) alkaline batteries with correct polarity, and close the lid.



If the battery compartment lid is accidentally detached, attach it as illustrated.

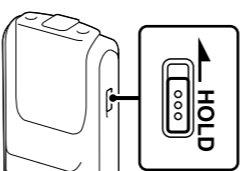


Tips

- When replacing the batteries, messages recorded or alarm settings are not erased even when you remove the batteries.
- When replacing the batteries, the clock continues moving for a certain period of time after you remove the batteries.

Step 3: Turning the IC Recorder On

Turning the power on



Slide the HOLD switch in the opposite direction from that of the arrow. The IC recorder turns on, and "ACCESS" flashes.

Turning the power off

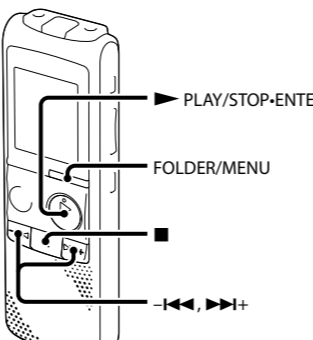
When you are not using the IC recorder, you can prevent the batteries from getting weak quickly by turning the power off.

Slide the HOLD switch in the direction of the arrow in the stop mode. "OFF" flashes. The IC recorder turns off within a few seconds.

Tips

- When you are not going to use the IC recorder for a long time, we recommend to turn off the IC recorder.
- When 10 minutes have passed after you have turned on the IC recorder and leave it without doing anything, the display goes off automatically. (Press any button to show the display.)

Step 4: Setting the Clock



You need to set the clock to use the alarm function or record the date and time. Clock setting display appears when you insert batteries for the first time, or when you insert batteries after the IC recorder has been without batteries for a certain period of time, the year section flashes in the display window.

Setting the clock after preparing a power source

1 Press \blacktriangleleft or \blacktriangleright to set the year, month, day, hour, and minute in sequence, and then press \blacktriangleright PLAY/STOP•ENTER.



2 Press \blacksquare (stop) to return to the stop mode display.

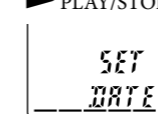
Setting the clock using the menu

While the IC recorder is in the stop mode, you can set the clock using the menu.

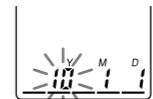
1 Press and hold FOLDER/MENU to enter the menu mode.

The menu mode will be displayed.

2 Press \blacktriangleleft or \blacktriangleright to select "SET DATE," and then press \blacktriangleright PLAY/STOP•ENTER.



3 Press \blacktriangleleft or \blacktriangleright to set the year, month, day, hour, and minute in sequence, and then press \blacktriangleright PLAY/STOP•ENTER.



4 Press \blacksquare (stop) to return to the stop mode display.

Tips

- Press FOLDER/MENU to return to the previous operation.
- You can set the time display for the clock to "12H" (12-hour display) or "24H" (24-hour display) in the "HOUR" menu. When "12H" (12-hour display) is set, "AM" or "PM" appears in the display window.

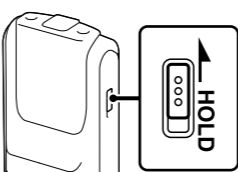
Note

- If you do not press \blacktriangleright PLAY/STOP•ENTER within 1 minute of entering the clock setting data, the clock setting mode is cancelled and the window will return to the stop mode display.

If you do not press \blacktriangleright PLAY/STOP•ENTER within 1 minute of entering the clock setting data, the clock setting mode is cancelled and the window will return to the stop mode display.

Preventing Accidental Operation (HOLD)

Locking the buttons



Slide the HOLD switch in the direction of the arrow in the recording or playback mode.

"HOLD" will flash, indicating that all the functions of the buttons are locked.



Unlocking the buttons

Slide the HOLD switch in the opposite direction from that of the arrow so that all buttons will be unlocked.

Note

- When the HOLD function is activated during recording, all the functions of the buttons are locked to prevent accidental operation. To stop recording, cancel the HOLD function first.

Tip

- Even if the HOLD function is activated, you can stop the alarm playback by pressing any button. (You cannot stop normal playback.)

Recording

Note

- Before making a recording, exit HOLD mode and turn on the power.

Selecting a folder

1 Press FOLDER/MENU to select the folder in which you want to record messages (A, B, C, D, or E).

There are 5 folders already available when you purchase the IC recorder.

If you do not change the folder after you stop recording, the next time you record you will record in the same folder.

Starting to record

1 Press \bullet REC/PAUSE in the stop mode.

The operation indicator lights in red. (When "LED" is set to "OFF" in the menu, the operation indicator does not light.)

You do not need to press and hold \bullet REC/PAUSE while recording.

The new message will be automatically recorded after the last recorded message.

2 Turn the built-in microphone in the direction of the source to be recorded.

To stop recording

1 Press \blacksquare (stop).

The IC recorder stops at the beginning of the current recording.

Other operations

pause recording*	Press \bullet REC/PAUSE. During recording pause, the operation indicator flashes in red and "PAUSE" flashes in the display window.
release pause and resume recording	Press \bullet REC/PAUSE again. Recording resumes from that point. (To stop recording after pausing recording, press \blacksquare (stop).)
review the current recording instantly	Press \blacktriangleright PLAY/STOP•ENTER. Recording stops and playback starts from the beginning of the message just recorded.
review during recording	Press and hold \blacktriangleleft during recording or recording pause. Recording stops and you can search backwards while listening to fast playback sound. After you release \blacktriangleleft , playback starts from that point.

* 1 hour after you pause recording, recording pause is automatically released and the IC recorder enters the stop mode.

Tips

- Messages recorded using this IC recorder will be recorded as MP3 files.
- You can record up to 99 messages in each folder.
- Before you start recording, we recommend you make a trial recording first, or monitor the recording.
- While recording you can lock all the functions of all the buttons so that you can prevent inadvertent operations by sliding the HOLD switch in the direction of the arrow.

Note

- While the operation indicator is flashing in orange, do not remove the batteries. Doing so may damage the data.
- Noise may be recorded if an object, such as your finger, etc., accidentally rubs or scratches the IC recorder during recording.
- Before making a recording, be sure to check the battery indicator.
- The maximum recording time varies if you record messages in mixed recording mode.

Remaining memory indication

During recording, the remaining memory indicator decreases one by one.

